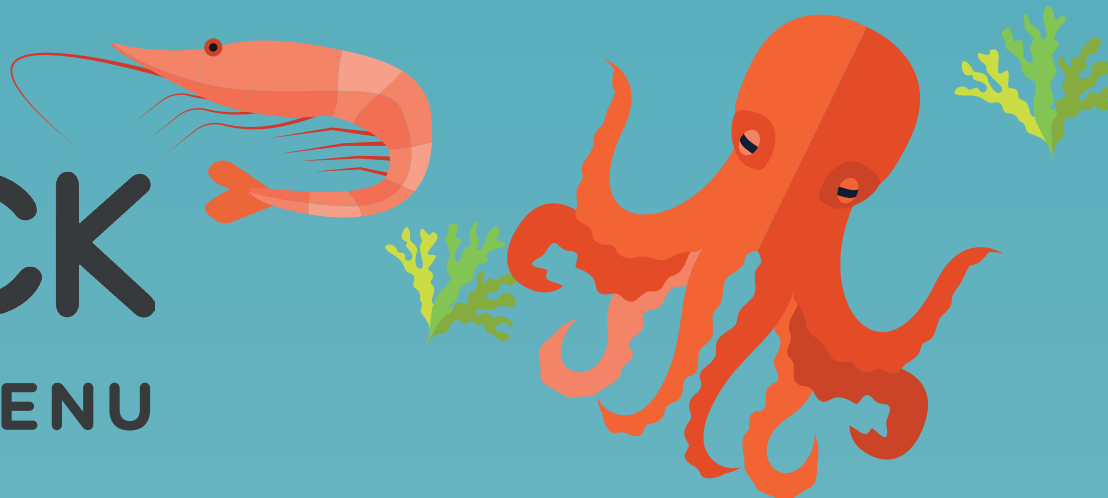


# TAMESIS DOCK

## DRINKS MENU



### SPARKLING & CHAMPAGNE

**PROSECCO, BEL CANTO** (Italy) **28.00**  
 Fine bubbles carry notes of peach and pear, with a refreshing zesty finish. 125ml **7.00**

**PERRIER JOUET GRAND BRUT** (Champagne) **72.00**  
 Fresh and lively with soft, apple fruit and a subtle complexity.

**VEUVE CLIQUOT YELLOW LABEL BRUT** (Champagne) **75.00**  
 A full-bodied yet refreshingly dry style of Champagne.

**BOUVET LADUBAY SAUMUR** (Loire, France) **35.00**  
 Fruity and floral with fine bubbles. Mouth watering honeysuckle, acacia and apple flavours.

### WHITE WINE

**AIRÉN, FINCA NOVA** (Spain) **19.00**  
 A refreshing white, with a delicate aroma of green apple, joined by subtle lemon and pear on the palate. 175ml **5.00**  
 250ml **6.60**

**PINOT GRIGIO, CRESCENDO** (Italy) **21.00**  
 A clean, fresh and fruity wine with lots of citrus and ripe pear flavours. Dry and crisp with refreshing finish. 175ml **5.80**  
 250ml **7.40**

**CATARRATTO, FEDELE, TERRE SICILIANE** (Italy) **20.95**  
 Enjoyable, refreshing and easy-drinking wine with fresh citrus and tropical fruit flavours.

**SAUVIGNON BLANC, KOKAKO** (New Zealand) **27.00**  
 Gooseberry, and tropical spectrum. Citrus backbone. Fresh acidity with more mid-palate weight. 175ml **7.00**  
 250ml **9.00**

**RIESLING, CLARO RESERVA** (Chile) **27.00**  
 A young, bright and clean wine with notes reminiscent of white flowers, white peaches and grapefruit.

**CHABLIS, E BONNEVILLE** (France) **36.00**  
 Crisp and elegant, pumping with refined flavours of luscious apple and citrus fruit.

### ROSÉ WINE

**PINOT GRIGIO ROSÉ, ADORNO** (Italy) **22.00**  
 A pale and delicate Rosé with beautiful soft strawberry flavours, nuances of nectarine and perfumed floral notes. 175ml **6.50**  
 250ml **7.80**

**MEDITERRANEAN ROSÉ, JAS DES VIGNES IGP** (France) **27.00**  
 This is pumping with refreshing notes of watermelon, peach and ripe strawberry.

### RED WINE

**TEMPRANILLO, FINCA NOVA** (Spain) **19.00**  
 Subtle notes of red cherry, raspberry and redcurrant dominate this medium bodied, soft and juicy red. 175ml **5.00**  
 250ml **6.60**

**VINHO TINTO, CASTELAO, FONTE DO NICO**, (Portugal) **21.00**  
 With aromas of fresh berries, this wine is soft in the mouth, with good quality tannin structure and a pleasant finish.

**MONTEPULCIANO D'ABRUZZO, TORRE CERERE** (Italy) **22.00**  
 This is a soft, fruity and approachable wine. Notes of red cherry and blackcurrant gives this wine a rustic feel. 175ml **6.00**  
 250ml **7.80**

**CABERNET SAUVIGNON, FLOR DEL FUEGO** (Chile) **23.00**  
 Stewed blackcurrant and plum, with a cassis-like concentration. Fulsome tannins make this a bold and rich red.

**MALBEC, RISCOS** (Chile) **27.00**  
 Powerful and full bodied with stewed black fruits and coffee aromas. 175ml **7.00**  
 250ml **9.00**

**BAROLO, MILAN** (Italy) **45.00**  
 A classic wine with a dry, earthy palate and moderate aromas of cherry, leather, smoke, and herbs.

Where wines are available by the glass, a 125ml glass can be offered.



## SPIRITS

Spirit Prices indicate 25ml measure, double for 50ml measure.

Additional £1 for a standard mixer (cola, lemonade, tonic, diet cola, soda).

Standard mixer is free with a double measure

Premium mixers are charged an additional £0.15 for a diet tonic mixer, £0.20 for ginger beer and energy mixers £0.25 for juice, and £0.75 for a Fevertree, respectively



## BEERS & CIDERS

DRAUGHT	Pint	Half
Pravha	4.80	2.50
Aspall Cyder	5.00	2.60
Devon Mist	5.00	2.60
Mosaic Pale Ale	5.00	2.60
Ease Up	5.00	2.60
Staropramen	5.00	2.60
Bitburger	5.20	2.70
Guinness	5.20	2.70

### BOTTLES

Corona	4.30
Peroni	4.50
Hop House 13	4.80
Brew Dog Lost Lager	4.90
Doom Bar	5.00
Blue Moon	5.00
Magner's	5.00
Leffe	5.20
Rekorderlig Strawberry & Lime/Pear	5.40
Tusker	5.50
Bitburger Drive* (Alcohol Free)	4.00
Daura Damm* (Gluten Free)	5.00

## SOFT DRINKS

SODA GUN	Half	Pint
Cola / Diet Cola	2.00	3.50
Lemonade / Tonic		
Ginger Beer	2.40	3.95
Energy Drink	2.40	3.95
Soda Water	0.60	1.20
with Lime	1.10	2.20
with Elderflower	2.10	2.70

### BOTTLES

Sparkling Water	330ml	1.90
	1.5Ltr	4.00
Still Water		1.90
Britvic Slimline Tonic	125ml	1.60
Fevertree Mixers	200ml	2.50
J20		2.75
Apple & Mango		
Orange & Passionfruit		
Fentiman's Rose Lemonade		3.50

## VODKA

Absolut	4.00
Absolut Flavoured Vanilla/Strawberry	4.20
Tito's (Gluten Free)	4.50

## LIQUEURS

Martini Rosso	3.75
Malibu	4.00
Triple sec	4.00
Disaronno	4.20
Kahlua	4.20
Campari	4.20
Drambuie	4.30
Pimms 50ml	5.00
Baileys 50ml	6.50

## WHISKY

### IRISH

Jamesons	4.20
----------	------

### SOUR MASH

Jack Daniel's	4.20
---------------	------

### BOURBON

Maker's Mark	4.40
--------------	------

### SINGLE MALTS

Jura Journey	4.50
The Singleton	4.50
Talisker Skye	4.90
Lagavulin	6.30
Yamazaki	6.80

## COGNAC

Martell	4.20
Remy Martin	6.00

## GIN

Beefeater Dry Gin	4.00
Adnam's Copper House	4.30
Bombay Sapphire	4.50

## FLAVOURED GIN

Beefeater Pink	4.10
Beefeater Blood Orange	4.20
Mor Wild Berry	4.90

## RUM

### WHITE

Havana Club 3yo	4.20
Banks White Rum	4.80

### GOLDEN

Havana Club Especial	4.20
Banks Golden Rum	4.80

### SPICED

Lamb's Spiced	3.90
Sailor Jerry	4.40
Kraken	4.50
Rumbillion	4.90

### DARK

Havana 7yo	4.50
Diplomatico Reserva	6.00

## SHOTS

Olmecca Silver	4.00
Jagermeister	4.00
Olmecca Gold	4.30
Sambuca	4.00
Jager/Skittle Bomb	5.25
Patron Cafe	5.30

## SHOOTERS

Slippery Nipple	5.00
Baby Guinness	5.00
B52	5.00

## HOT DRINKS

Americano	2.00	Hot Chocolate	2.90
Cappuccino	2.40	Bailey's Latte	7.50
Latte	2.50	Black Tea	1.80
Flat white	2.80	Green, Camomile, Earl Grey	2.00
Espresso	1.80	*Extra shot	0.30
Mocha	2.90	*Soya milk	0.40



@TamesisDock

www.tdock.co.uk

E: ahoy@tdock.co.uk

T: 020 7582 1066